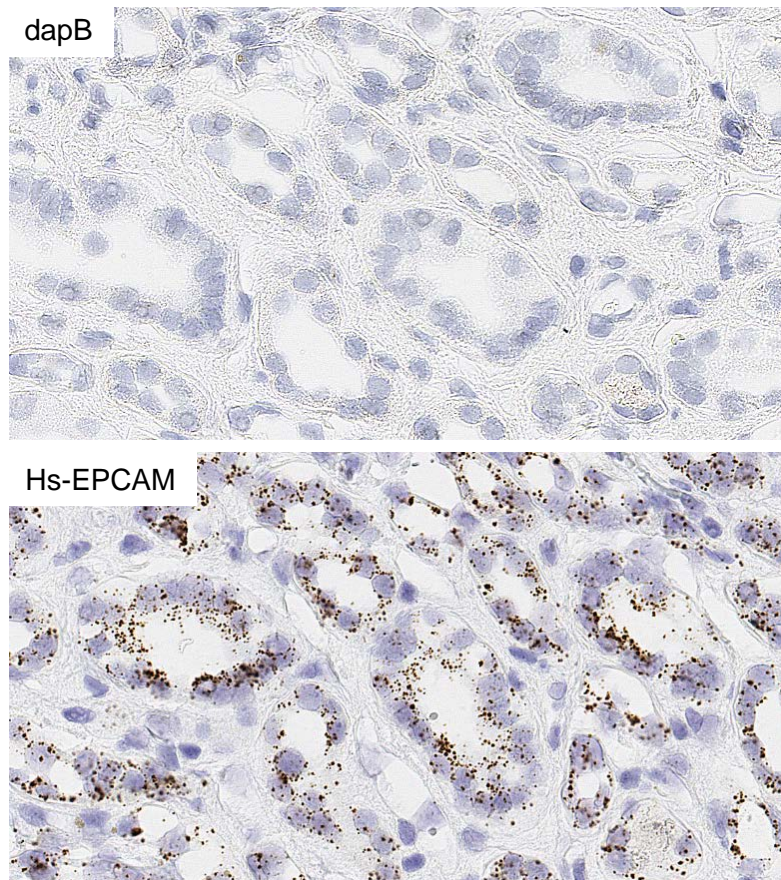


RNASCOPE® PROBE INFORMATION

Catalog number:	310281 (Manual)*, 310289 (2.5 VS assay)*, 310288 (2.5 LS assay)*
Species:	Homo sapiens
Target Gene:	EPCAM
Alternate names:	DIAR5,EGP-2, EGP314,EGP40,EPCAM,ESA,HNPCC8,KS1/4,KSA, M4S1,MIC18,MK-1,TACSTD1,TROP1
Entrez Gene ID:	4072
Accession#:	NM_002354
Unigene:	Hs.542050
Target Sequence:	Homo sapiens epithelial cell adhesion molecule (EPCAM), mRNA
Probe Region:	64 - 1268
ZZ pair number:	20

* Target region is the same across RNAScope® manual and automation assays

PROBE DATA



RNAScope® Manual Brown Assay performed on FFPE Kidney cancer tissue under standard condition, using the dapB Negative Control probe (Top; Cat. No. 310043) and Hs-EPCAM probe (Bottom; Cat. No. 310281), 40X

For more information regarding this target gene: <http://www.ncbi.nlm.nih.gov/gene/4072>

Note: ACD always recommends RNA quality verification using control probes, prior to running a target marker. Expression pattern may vary from data shown here based on tissue preparation methods and/or associated sample biology.