



TARGET PROBE: HS-BRCA2

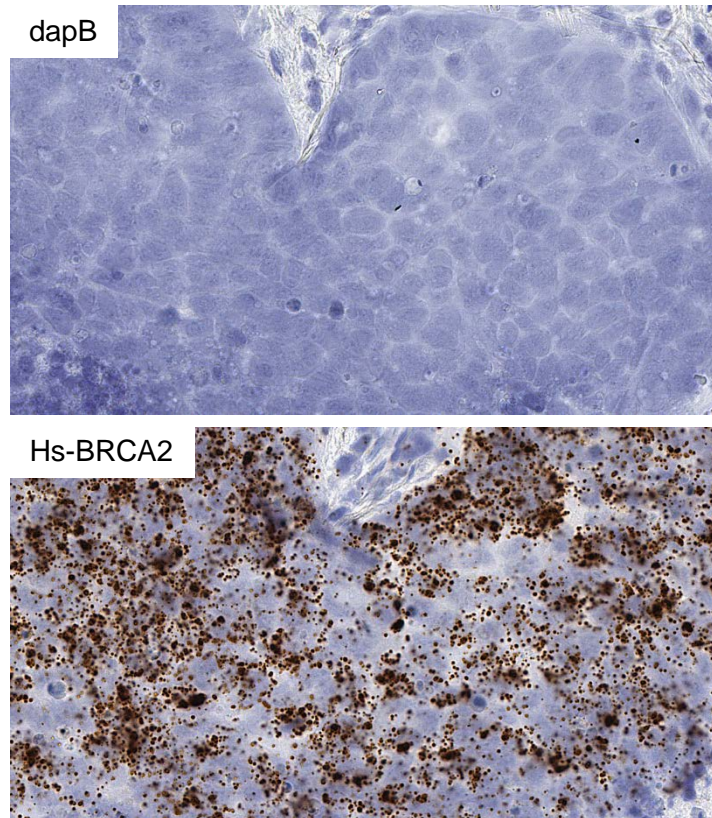
ADVANCED CELL DIAGNOSTICS

RNASCOPE® PROBE INFORMATION

Catalog number:	401371 (Manual)*, 401379 (2.5 VS assay)*, 401378 (2.5 LS assay)*
Species:	Homo sapiens
Target Gene:	BRCA2
Alternate names:	BRCA2,BRCC2,BROVCA2,FACD,FAD,FAD1,FANCB,FANCD,FANCD1, GLM3,PNCA2
Entrez Gene ID:	675
Accession#:	NM_000059.3
Unigene:	Hs.34012
Target Sequence:	Homo sapiens breast cancer 2, early onset (BRCA2), mRNA
Probe Region:	347 - 1439
ZZ pair number:	20

* Target region is the same across RNAscope® manual and automation assays

PROBE DATA



RNAscope® Manual Brown Assay performed on FFPE lung cancer tissue under standard condition, using the dapB Negative Control probe (Top; Cat. No. 310043) and Hs-BRCA2 probe (Bottom; Cat. No. 401371), 40X

For more information regarding this target gene: <http://www.ncbi.nlm.nih.gov/gene/675>

Note: ACD always recommends RNA quality verification using control probes, prior to running a target marker. Expression pattern may vary from data shown here based on tissue preparation methods and/or associated sample biology.