



# RNAscope<sup>®</sup> Fluorescent Multiplex Reagent Kit User Manual PART 2

*For Part 1 Sample Preparation and Pretreatment Guide, see Document Number 320513-USM for Fresh Frozen Tissue*

For Research Use Only. Not for diagnostic use.

### **Trademarks**

RNAscope® and HybEZ™ are trademarks of Advanced Cell Diagnostics, Inc. All other trademarks belong to their respective owners.

### **Citing RNAscope® in Publications**

When describing a procedure for publication using this product, please refer to it as the RNAscope® Assay and cite: Wang F, Flanagan J, Su N, Wang L-C, Bui S, Nielson A, Wu X, Vo H-T, Ma X-J and Luo Y. RNAscope®: A Novel *In Situ* RNA Analysis Platform for Formalin-Fixed Paraffin-Embedded Tissues. *J. Mol. Diagnostics*, 2012, 14:22–29.

### **Disclaimers**

Advanced Cell Diagnostics, Inc. reserves the right to change its products and services at any time to incorporate technological developments. This manual is subject to change without notice.

Although this manual has been prepared with every precaution to ensure accuracy, Advanced Cell Diagnostics, Inc. assumes no liability for any errors, omissions, or for any damages resulting from the use of this information.

### **Copyright**

© 2017, Advanced Cell Diagnostics, Inc. All rights reserved.

# Contents

|   |               |
|---|---------------|
| <b>Chapter 1. Product Information</b> .....                       | <b>5</b>      |
| About this guide.....   | 5             |
| Product description.....  | 5             |
| Background.....   | 5             |
| Overview.....   | 5             |
| Compatible sample types.....                                      | 6             |
| Kit contents and storage.....                                     | 7             |
| RNAscope® Probes.....   | 7             |
| RNAscope® Fluorescent Multiplex Reagent Kit.....                  | 8             |
| Required materials and equipment.....                             | 9             |
| HybEZ™ Hybridization System.....                                  | 9             |
| User-supplied materials.....                                      | 9             |
| <br><b>Chapter 2. Before You Begin</b> .....                      | <br><b>11</b> |
| Important procedural guidelines.....                              | 11            |
| <br><b>Chapter 3. RNAscope® Fluorescent Multiplex Assay</b> ..... | <br><b>12</b> |
| Workflow.....   | 12            |
| Materials required for the assay.....                             | 13            |
| Prepare the materials.....  | 13            |
| Prepare 1X Wash Buffer.....                                       | 13            |
| Prepare probes.....   | 13            |
| Equilibrate reagents.....   | 14            |
| Run the assay.....  | 14            |
| Hybridize probe.....  | 14            |
| Hybridize Amp 1-FL.....   | 14            |
| Hybridize Amp 2-FL.....   | 15            |
| Hybridize Amp 3-FL.....   | 15            |
| Hybridize Amp 4-FL.....   | 15            |
| Counterstain and mount the slides.....                            | 16            |
| Evaluate the samples.....   | 16            |
| Fluorescent Imaging Recommendations.....                          | 17            |
| Control examples.....   | 18            |
| Troubleshooting.....  | 18            |

|  |           |
|--|-----------|
| <b>Appendix A. Reagent Volume Guidelines</b> ..... | <b>19</b> |
| Determine reagent volume .....                     | 19        |
| <b>Appendix B. Safety</b> .....                    | <b>20</b> |
| Chemical safety .....                              | 20        |
| Biological hazard safety .....                     | 20        |
| <b>Documentation and support</b> .....             | <b>22</b> |
| Obtaining SDSs .....                               | 22        |
| Obtaining support .....                            | 22        |
| Contact information .....                          | 22        |
| Limited product warranty .....                     | 22        |

# 1

## Chapter 1. Product Information



Before using this product, read and understand the information in **Appendix B. Safety** on page 20 in this document.

---

**IMPORTANT!** We recommend reading the entire user manual before beginning any protocols.

---

### About this guide

This user manual provides guidelines and protocols to use the RNAscope® Fluorescent Multiplex Reagent Kit (Cat. No. 320850). You must use both an RNAscope® Reagent Kit User Manual and a sample preparation and pretreatment user guide to perform the entire assay.

---

**IMPORTANT!** For *Part 1 Sample Preparation and Pretreatment Guide*, see Document No. 320513-USM for Fresh Frozen Tissue.

---

Visit <https://acdbio.com/technical-support/user-manuals> to download a sample preparation user guide.

### Product description

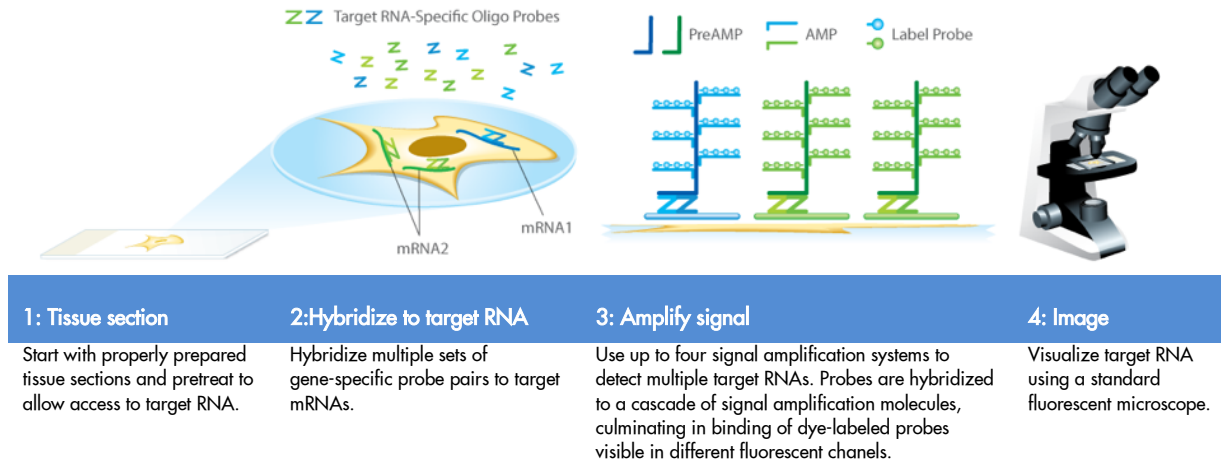
#### Background

The RNAscope® Fluorescent Multiplex Assay uses a novel and proprietary method of *in situ* hybridization (ISH) to simultaneously visualize up to three different RNA targets per cell in samples mounted on slides. Simultaneous detection of four different RNA targets is possible, and requires a custom kit order. The assay is based on ACD's patented signal amplification and background suppression technology and incorporates multiplexed signal amplification systems, which enable users to investigate expression as well as positional relationship between multiple genes within a cellular context.

#### Overview

The RNAscope® Fluorescent Multiplex Assay procedure is illustrated in Figure 1 on page 6 and can be completed in six hours. Most of the RNAscope® Assay reagents are available in convenient Ready-To-Use (RTU) dropper bottles and provide a simple, nearly pipette-free workflow. Starting with properly prepared samples, sections are first pretreated, and then RNA-specific probes designed for different fluorescent detection channels are hybridized to multiple target RNAs. After a series of highly effective and specific signal amplifications, single RNA transcripts for two or more target genes appear as punctate dots in two or more distinctly fluorescent channels. These dots are visible using a common fluorescent microscope with the appropriate filters.

**Figure 1.** Procedure overview



## Compatible sample types

The RNAscope® Fluorescent Multiplex Assay is compatible with fresh frozen (FF) tissue, cultured adherent cells on chamber slides, fixed frozen tissue, and peripheral blood mononuclear cells (PBMC). Use the guide below to determine the appropriate pretreatment reagent from the Universal Pretreatment Reagents Kit (Cat No. 322380) or RNAscope® Protease II and IV Reagents (Cat. No. 322340).

| Fluorescent Detection Pretreatment Guide  |                                   |                       |
|---|-----------------------------------|-----------------------|
| Tissue Type                               | Pretreatment Kit                  | Pretreatment Cat. No. |
| FFPE                                      | RNAscope® Target Retrieval*       | 322335                |
|   | RNAscope® Protease III            | 322337                |
| Cultured Adherent Cells                   | RNAscope® Protease III            | 322337                |
| Fresh Frozen                              | RNAscope® Protease IV             | 322336                |
| Fixed Frozen                              | RNAscope® Target Retrieval (10X)* | 322001                |
|   | RNAscope® Protease IV             | 322336                |
| Peripheral Blood Mononuclear Cells (PBMC) | RNAscope® Protease III            | 322337                |

\* RNAscope® Target Retrieval Reagents is not included in the RNAscope® Fluorescent Multiplex Reagent Kit. Please order it separately (Cat. No. 322000, includes quantity of 4, Cat. No. 322001).

Please contact technical support at [support@acdbio.com](mailto:support@acdbio.com) if you have any questions.

Kit contents and storage  
 The RNAscope® Fluorescent Multiplex Assay requires the RNAscope® Probes and the RNAscope® Fluorescent Multiplex Reagent Kit. Probes and Reagent Kits are available separately.

## RNAscope® Probes

The RNAscope® Probes consist of user-specified Target Probes and Positive and Negative Control Probes. Visit <https://acdbio.com/products> to find a gene-specific Target Probe or appropriate Control Probes. Each Target Probe contains a mixture of short oligonucleotides designed to bind to a specific target RNA and detectable in one of three color channels, C1, C2, and C3 using the Amp 4 amplification step.

**Note:** Different colors are assigned to the C1, C2, and C3 color channels depending on the particular RNAscope® Assay. The color channels for the RNAscope® Fluorescent Multiplex Assay are shown in the following table:

| Probe Channel ID | Amp 4 Alt A Fluorescent Label |             |         |
|------------------|-------------------------------|-------------|---------|
|                  | Excitation                    | Emission    | Color   |
| C1*              | Alexa 488 nm                  | 540 ± 10 nm | GREEN   |
| C2               | Atto 550 nm                   | 580 ± 10 nm | ORANGE  |
| C3               | Atto 647 nm                   | 690 ± 10 nm | FAR RED |

\* Default channel

C1 target probes are Ready-To-Use (RTU), while C2 and C3 probes are shipped as a 50X concentrated stock. To independently detect different target RNAs in a multiplex assay, each target probe must be in a different color channel and there must be a C1 probe in the mixture. "Probe Diluent" (Cat. No. 300041) can be used in place of a specific target probe.

**IMPORTANT!** C1 and C2 probes can be used for either fluorescent or chromogenic detection. However, 3-plex or higher multiplexing capability is only possible with the fluorescent kit.

There are three options for alternate fluorescent color modules. Any fluorescent label combinations (Amp 4 Alt A, B, or C) can be selected based on your experiment design.

| Probe Channel ID | Color Module Options |                |                |
|------------------|----------------------|----------------|----------------|
|                  | Amp 4 Alt A-FL       | Amp 4 Alt B-FL | Amp 4 Alt C-FL |
| C1               | Alexa 488            | Atto 550       | Atto 550       |
| C2               | Atto 550             | Alexa 488      | Atto 647       |
| C3               | Atto 647             | Atto 647       | Alexa 488      |

Each probe is sufficient for staining ~20 sections, each with an area of approximately 20 mm x 20 mm (0.75" x 0.75"). Larger tissue sections will result in fewer tests. The probes have a shelf life of two years from the date of bulk manufacturing when stored as indicated in the following table:

| Target Probes                       |                                      |          |  |                 |         |
|-------------------------------------|--------------------------------------|----------|--|-----------------|---------|
| <input checked="" type="checkbox"/> | Reagent                              | Cat. No. | Content  | Quantity        | Storage |
|                                     | Target Probe – [species]– [gene]     | Various  | Ready-To-Use (RTU) probe for color channel 1   | 3 mL x 1 bottle | 2–8°C   |
|                                     | Target Probe – [species]– [gene]– C2 | Various  | 50X probe for color channel 2  | 60 µL x 1 tube  | 2–8°C   |
|                                     | Target Probe – [species]– [gene]– C3 | Various  | 50X probe for color channel 3  | 60 µL x 1 tube  | 2–8°C   |
| Control Probes                      |                                      |          |  |                 |         |
| <input checked="" type="checkbox"/> | Reagent                              | Cat. No. | Content  | Quantity        | Storage |
|                                     | Positive Control Probe               | Various  | RTU probe targeting a common housekeeping gene. Each detection channel has its own positive control probe. | 3 mL x 1 bottle | 2–8°C   |
|                                     | 3-Plex Positive Control Probe        | Various  | RTU mixture of three probes targeting POLR2A in channel C1, PPIB in channel C2, and UBC in channel C3.     | 3 mL x 1 bottle | 2–8°C   |
|                                     | 3-plex Negative Control Probe        | 320871   | RTU probe targeting a bacterial gene (dapB). Each detection channel has its own negative control probe.    | 3 mL x 1 bottle | 2–8°C   |
|                                     | Probe Diluent                        | 300041   | RTU Target Probe diluent   | 3 mL x 1 bottle | 2–8°C   |

## RNAscope® Fluorescent Multiplex Reagent Kit

Each RNAscope® Fluorescent Multiplex Reagent Kit (Cat. No. 320850) provides enough reagents to stain ~20 tissue sections ~20 sections, each with an area of approximately 20 mm x 20 mm (0.75" x 0.75"). Larger tissue sections will result in fewer tests. Each kit contains three sub-kits: a Pretreatment Kit, a Detection Kit, and a Wash Buffer Kit.

**IMPORTANT!** Directions to use the Pretreatment Kit are included in separate sample preparation and pretreatment user guides.

The reagents have a shelf life of nine months from the date of bulk manufacturing when stored as indicated in the following table:

| Pretreatment Reagents (Cat. No. 322340)                    |                        |                    |         |
|--|------------------------|--------------------|---------|
| <input checked="" type="checkbox"/>                        | Reagent                | Quantity           | Storage |
|  | RNAscope® Protease III | 4.5 mL x 1 bottle  | 2–8°C   |
|  | RNAscope® Protease IV  | 4.5 mL x 2 bottles | 2–8°C   |
| Fluorescent Multiplex Detection Reagents (Cat. No. 320851) |                        |                    |         |
| <input checked="" type="checkbox"/>                        | Reagent                | Quantity           | Storage |
|  | Amp 1-FL               | 3 mL x 1 bottle    | 2–8°C   |
|  | Amp 2-FL               | 4.5 mL x 1 bottle  | 2–8°C   |
|  | Amp 3-FL               | 3 mL x 1 bottle    | 2–8°C   |



| Fluorescent Multiplex Detection Reagents (Cat. No. 320851) |                               |                   |                            |
|--|-------------------------------|-------------------|----------------------------|
| <input checked="" type="checkbox"/>                        | Reagent                       | Quantity          | Storage                    |
|  | Amp 4-FL-Alt A Display module | 4.5 mL x 1 bottle | 2–8°C                      |
|  | Amp 4-FL-Alt B Display module | 4.5 mL x 1 bottle | 2–8°C                      |
|  | Amp 4-FL-Alt C Display module | 4.5 mL x 1 bottle | 2–8°C                      |
|  | DAPI                          | 3 mL x 1 bottle   | 2–8°C                      |
| Wash Buffer Reagents (Cat. No. 310091)                     |                               |                   |                            |
| <input checked="" type="checkbox"/>                        | Reagent                       | Quantity          | Storage                    |
|  | 50X Wash Buffer               | 60 mL x 4 bottles | Room temperature (15–30°C) |

**IMPORTANT!** Do not interchange the reagent components of the Reagent Kits, even those having the same name.

## Required materials and equipment

The following materials and equipment are needed to perform the RNAscope® Assay.

### HybEZ™ Hybridization System

**IMPORTANT!** The RNAscope® Assay has been qualified using this system only.

Use the HybEZ™ Hybridization System to perform RNAscope® Assay hybridization and incubation steps. These steps require humid conditions to prevent sections from drying out.

For instructions on how to use the HybEZ™ Hybridization System, refer to the HybEZ™ Hybridization System User Manual available at <https://acdbio.com/technical-support/user-manuals> and view the training video at <https://acdbio.com/technical-support/learn-more>. The system contains the following components:

| <input checked="" type="checkbox"/> | Component  | Quantity | Cat. No.  |
|-------------------------------------|--|----------|---|
|                                     | HybEZ™ Oven (110 or 220 VAC) or HybEZ™ II Oven (110 or 220V) | 1 oven   | 310010 or 310013 (HybEZ™)<br>321710 or 321720 (HybEZ™ II) |
|                                     | HybEZ™ Humidity Control Tray (with lid)                      | 1 tray   | 310012  |
|                                     | ACD EZ-Batch™ Slide Rack (20 slide capacity)                 | 1 rack   | 310017  |
|                                     | HybEZ™ Humidifying Paper                                     | 2 sheets | —   |

**Note:** To order HybEZ™ Humidifying Paper Pack, 15 sheets, use Cat. No. 310015.

## User-supplied materials

| <input checked="" type="checkbox"/> | Description   | Supplier                            | Cat. No.  |
|-------------------------------------|---|-------------------------------------|-----------|
|                                     | ProLong Gold Antifade Mountant  | Thermo Fisher Scientific/MLS*       | P36930    |
|                                     | Tissue-Tek® Vertical 24 Slide Rack  | American Master Tech Scientific/MLS | LWSRA24   |
|                                     | Tissue-Tek® Staining Dish   | American Master Tech Scientific/MLS | LWT4457EA |
|                                     | Tissue-Tek® Clearing Agent Dish, xylene resistant   | American Master Tech Scientific/MLS | LWT4456EA |
|                                     | Cover glass 24 x 50 mm  | Fisher Scientific/MLS               | 12-545-F  |
|                                     | Carboy (>3L)  | MLS                                 | —         |
|                                     | Water bath or incubator, capable of holding temperature at 40 +/- 1°C   | MLS                                 | —         |
|                                     | Distilled water   | MLS                                 | —         |
|                                     | Tubes (various sizes)   | MLS                                 | —         |
|                                     | Paper towel or absorbent paper  | MLS                                 | —         |
|                                     | Fluorescent microscope with filter set:<br>Ex 358 nm/Em 461 nm (DAPI)<br>Ex 501 nm/Em 523 nm (FITC)<br>Ex 554 nm/Em 576 nm (Cy3)<br>Ex 644 nm/Em 669 nm (Cy5) | MLS                                 | —         |

\* Major Laboratory Supplier in North America. For other regions, please check Catalog Numbers with your local lab supplier.

# 2

## Chapter 2. Before You Begin

---

**IMPORTANT!** For *Part 1 Sample Preparation and Pretreatment Guide*, see Document No. 320513-USM for Fresh Frozen Tissue.

---

Prior to running the RNAscope® Assay on your samples for the first time, we recommend that you:

- View the video demonstrations available at <https://acdbio.com/technical-support/learn-more>.
- Use an RNAscope® Fluorescent Multiplex Channel Assessment Slide (Cat. No. 310022) to ensure that the fluorescent microscope is properly equipped with the correct excitation and emission filter set.

### Important procedural guidelines

- Start with properly prepared sections. Refer to our sample preparation and pretreatment user guides available at <https://acdbio.com/technical-support/user-manuals>. Use only samples mounted on SuperFrost Plus® Slides (Fisher Scientific; Cat. No. 12-550-15).
- Follow the recommended pretreatment conditions for your sample. Refer to our sample preparation and pretreatment user guides available at <https://acdbio.com/technical-support/user-manuals>.
- Always run positive and negative control probes on your sample to assess sample RNA quality and optimal permeabilization.
- Do *not* substitute required materials. Assay has been validated with these materials only.
- Follow the protocol exactly for best results.
- Do not let your sections dry out during the procedure.
- Use good laboratory practices and follow all necessary safety procedures. Refer to **Appendix B. Safety** on page 20 for more information.

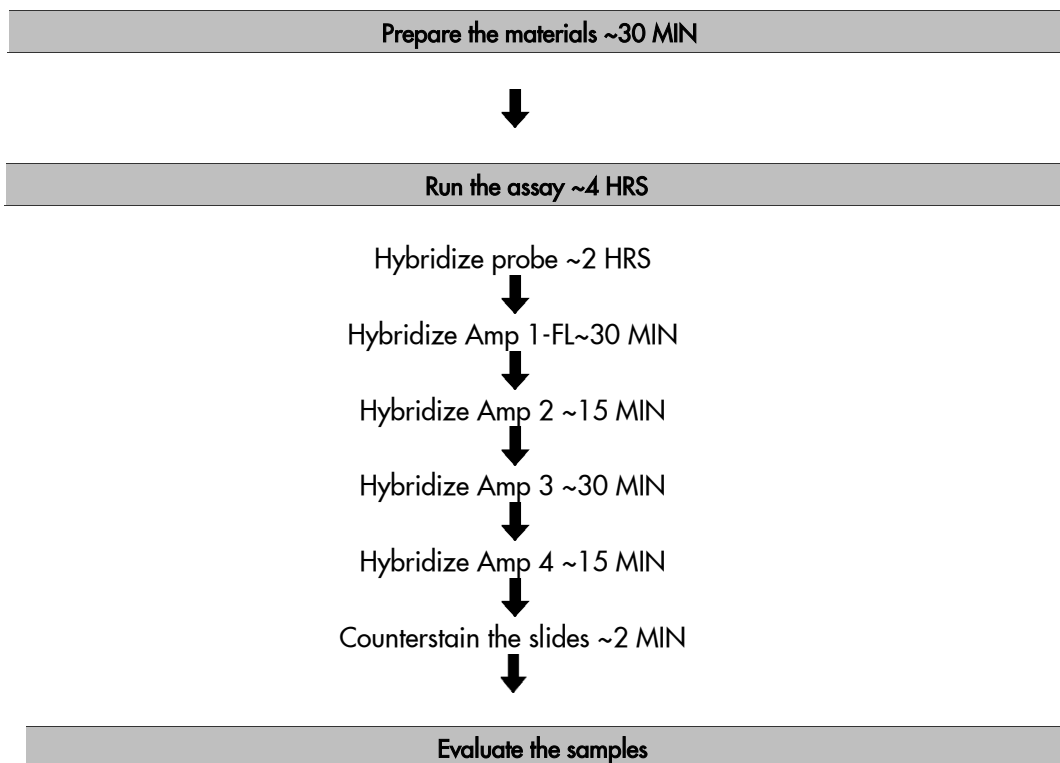
# 3

## Chapter 3. RNAscope® Fluorescent Multiplex Assay

**IMPORTANT!** For Part 1 Sample Preparation and Pretreatment Guide, see Document No. 320513-USM for Fresh Frozen Tissue.

This procedure flows directly from sample preparation and pretreatment. Refer to the appropriate sample preparation and pretreatment user guide for your specific sample type.

### Workflow



## Materials required for the assay

| Materials provided by the RNAscope® Fluorescent Multiplex Kit  | Materials provided by RNAscope® Probes  | Other materials and equipment  |
|--|---|--|
| <ul style="list-style-type: none"> <li>• 50X Wash Buffer</li> <li>• Amp 1-FL</li> <li>• Amp 2-FL</li> <li>• Amp 3-FL</li> <li>• Amp 4-FL-Alt A, Amp 4-FL-Alt B, or Amp 4-FL-Alt C</li> <li>• DAPI</li> </ul> | <ul style="list-style-type: none"> <li>• C1 Target Probe</li> <li>• 50X C2 Target Probe</li> <li>• 50X C3 Target Probe</li> <li>• 3-Plex Positive Control Probe</li> <li>• 3-Plex Negative Control Probe</li> </ul> | <ul style="list-style-type: none"> <li>• Prepared sections</li> <li>• Distilled water</li> <li>• Carboy (&gt;3L)</li> <li>• Tissue-Tek® Staining Dish</li> <li>• Tissue-Tek® Clearing Agent Dish, xylene-resistant</li> <li>• HybEZ™ Humidifying System</li> <li>• Water bath or incubator</li> <li>• Tissue-Tek® Vertical 24 Slide Rack</li> <li>• Tubes (various sizes)</li> <li>• Paper towel or absorbent paper</li> <li>• ProLong Gold Antifade Mountant</li> <li>• Cover Glass, 24 mm x 50 mm</li> </ul> |

## Prepare the materials

You may prepare the reagents at the same time you prepare pretreatment reagents. Refer to a sample preparation and pretreatment user guide available at <https://acdbio.com/technical-support/user-manuals>. Some of the materials may be prepared in advance and stored at room temperature.

### Prepare 1X Wash Buffer

- Prepare 3 L of 1X Wash Buffer by adding 2.94 L distilled water to 1 bottle (60 mL) in a large carboy. Mix well.

**Note:** If precipitation occurs in 50X Wash Buffer, warm it up at **40°C** for **10–20 MIN** before making 1X Wash Buffer. 1X Wash Buffer may be prepared ahead of time and stored at room temperature for up to one month.

### Prepare probes

1. Warm probes for **10 MIN** at **40°C** in a water bath or incubator, then cool to **ROOM TEMPERATURE (RT)**.
2. Briefly spin the C2 and C3 probes to collect the liquid at the bottom of the tubes.
3. Mix 1:1:50 ratios of C2, C3, and C1 probes by pipetting 1 volume of C2 and 1 volume of C3 probes to 50 volumes of C1 probe into a tube. Invert the tube several times.

**Note:** Do not mix probes of the same channel. The mixed Target Probes can be stored at **2–8°C** for up to 6 months.

## Equilibrate reagents

- Place Amp 1–4 FL reagents at **RT**.
- Ensure HybEZ™ Oven and prepared Humidity Control Tray are at **40°C**.

## Run the assay

---

**IMPORTANT!** Do **NOT** let sections dry out between incubation steps. Work *quickly* and fill barrier with solutions.

---

**IMPORTANT!** View the wash step video at [www.acdbio.com/technical-support/learn-more](http://www.acdbio.com/technical-support/learn-more) before proceeding.

**Note:** We recommend running control probe on your sample before running any of your specific target probes to optimize the protocol.

## Hybridize probe

---

**IMPORTANT!** Prior to this step, ensure you have pretreated your samples. See Catalog No. 320513 for Fresh Frozen Tissue.

---

**IMPORTANT!** Ensure probes are prewarmed and cooled to RT prior to use.

1. Tap and/or flick to remove excess liquid from slides and place in the HybEZ™ Slide Rack. Add ~4 drops of the appropriate probe to entirely cover each section.

**Note:** Refer to **Appendix A. Reagent Volume Guidelines** on page 19 to determine the recommended number of drops needed per slide. For example, for a 0.75" x 0.75" barrier add 4 drops of the appropriate probe.

2. Place the HybEZ™ Slide Rack in the HybEZ™ Humidity Control Tray removed from the HybEZ™ Oven. Close tray and insert back into the oven for **2 HRS at 40°C**.

---

**IMPORTANT!** To prevent evaporation, make sure the turn nob is completely turned to lock position.

3. Remove the HybEZ™ Control Tray from the oven and remove HybEZ™ Slide Rack.
4. One slide at a time, *quickly* remove excess liquid by decanting and place slide in a Tissue-Tek® Slide Rack submerged in the Tissue-Tek® Staining Dish filled with 1X Wash Buffer.
5. Wash slides in 1X Wash Buffer for **2 MIN at RT**. Agitate slides by moving the slide rack up and down in the dish.
6. Repeat Step 5 with fresh 1X Wash Buffer.

## Hybridize Amp 1-FL

1. Take each slide one at a time from the Tissue-Tek® Slide Rack and tap/and or flick to remove the excess liquid before placing in the HybEZ™ Slide Rack. Add ~4 drops of Amp 1-FL to entirely cover each section.

2. Place the HybEZ™ Slide Rack in the HybEZ™ Humidity Control Tray removed from the HybEZ™ Oven. Seal tray and insert back into the oven for **30 MIN** at **40°C**.
3. Remove the HybEZ™ Control Tray from the oven and remove HybEZ™ Slide Rack.
4. One slide at a time, *quickly* remove excess liquid and place slide in a Tissue-Tek® Slide Rack submerged in the Tissue-Tek® Staining Dish filled with 1X Wash Buffer.
5. Wash slides in 1X Wash Buffer for **2 MIN** at **RT** with occasional agitation.
6. Repeat Step 5 with fresh 1X Wash Buffer.

## Hybridize Amp 2-FL

1. Take each slide one at a time from the Tissue-Tek® Slide Rack and tap and/or flick to remove the excess liquid before placing in the HybEZ™ Slide Rack. Add ~4 drops of Amp 2-FL to entirely cover each section.
2. Place the HybEZ™ Slide Rack in the HybEZ™ Humidity Control Tray. Close tray and insert into the oven for **15 MIN** at **40°C**.
3. Remove the HybEZ™ Control Tray from the oven and remove HybEZ™ Slide Rack.
4. One slide at a time, *quickly* remove excess liquid and place slide in a Tissue-Tek® Slide Rack submerged in the Tissue-Tek® Staining Dish filled with 1X Wash Buffer.
5. Wash slides in 1X Wash Buffer for **2 MIN** at **RT** with occasional agitation.
6. Repeat Step 5 with fresh 1X Wash Buffer.

## Hybridize Amp 3-FL

1. Take each slide one at a time from the Tissue-Tek® Slide Rack and tap and/or flick to remove the excess liquid before placing in the HybEZ™ Slide Rack. Add ~4 drops of Amp 3-FL to entirely cover each section.
2. Place the HybEZ™ Slide Rack in the HybEZ™ Humidity Control Tray. Close tray and insert into the oven for **30 MIN** at **40°C**.
3. Remove the HybEZ™ Control Tray from the oven and remove HybEZ™ Slide Rack.
4. One slide at a time, *quickly*, remove excess liquid and place slide in a Tissue-Tek® Slide Rack submerged in the Tissue-Tek® Staining Dish filled with 1X Wash Buffer.
5. Wash slides in 1X Wash Buffer for **2 MIN** at **RT** with occasional agitation.
6. Repeat Step 5 with fresh 1X Wash Buffer.

## Hybridize Amp 4-FL

1. Take each slide one at a time from the Tissue-Tek® Slide Rack and tap and/or flick to remove the excess liquid before placing in the HybEZ™ Slide Rack. Add ~4 drops of Amp 4-FL to entirely cover each section.  
**Note:** There are 3 options for alternate fluorescent color modules. Choose any one fluorescent label combination (Amp 4-FL-Alt A, B, or C).
2. Place the HybEZ™ Slide Rack in the HybEZ™ Humidity Control Tray. Close tray and insert into the oven for **15 MIN** at **40°C**.

3. Remove the HybEZ™ Control Tray from the oven and remove HybEZ™ Slide Rack.
4. One slide at a time, *quickly* remove excess liquid and place slide in a Tissue-Tek® Slide Rack submerged in the Tissue-Tek® Staining Dish filled with 1X Wash Buffer.
5. Wash slides in 1X Wash Buffer for **2 MIN** at **RT** with occasional agitation.
6. Repeat step 5 with fresh 1X Wash buffer.

## Counterstain and mount the slides

---

**IMPORTANT!** Do this procedure with no more than 5 slides at a time.

---

1. Remove excess liquid from the slides and add ~4 drops of DAPI to each section.
2. Incubate for **30 SEC** at **RT**.
3. Remove DAPI from slides and *immediately* place 1–2 drops of the ProLong Gold Antifade Mountant onto each section.
4. Carefully place a 24 mm x 50 mm coverslip over the tissue section. Avoid trapping air bubbles. Store slides in the dark at **2–8°C**.

---

**IMPORTANT!** Image the slides after 8 hours or within a few days.

---

## Evaluate the samples

For an example of successful staining, see Figure 2 on page 18. Examine tissue sections under a standard fluorescent microscope at 20–40X magnification. A confocal microscope may also be used:

- Assess tissue and cell morphology.
- Assess positive control signal strength. Positive control signal should be visible as punctuate dots within cell with 20X magnification.
- Assess negative control background. Five dots in every 10 cells displaying background staining per microscope field is acceptable with 20X magnification.
- Evaluate target probe signal using the scoring guidelines in the next section.



## Fluorescent Imaging Recommendations

Here are a few fluorescent imaging recommendations:

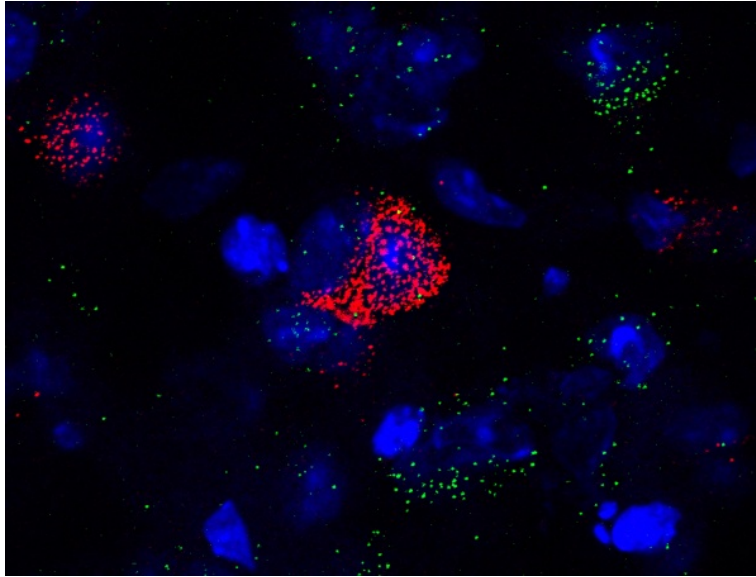
| Viewing   | Detection  | Microscope  | Optics  |
|---|--|---|---|
| <ul style="list-style-type: none"> <li>Image capture is the recommended digital capturing option</li> <li>Fluorescence viewing is the recommended viewing option</li> </ul> | <ul style="list-style-type: none"> <li>Microscope with camera and fluorescence options. Multispectrum microscope/camera system recommended (eg. Nuance FX)</li> <li>Fluorescence detection requires a high resolution and high sensitivity cooled CCD camera that is 64 <math>\mu\text{m}</math> pixel size or smaller with &gt; 65% peak quantum efficiency</li> <li>Common models include: Orca-Flash 4.0 (Hamamatsu), and Nuance FX (Nuance)</li> </ul> | <ul style="list-style-type: none"> <li>Leica DM series or equivalent</li> <li>Zeiss Axio Imager or equivalent</li> <li>Inverted microscope is okay if optics and condenser meet requirements</li> </ul> | <ul style="list-style-type: none"> <li>20X (N.A. 0.75) air, 40X (N.A. 0.8) air, 40X (N.A. 1.3) oil, 63X (N.A. 1.3) oil, and 100X (N.A. 1.4) oil</li> <li>20X and 40X objective can be used for visualization of high expression genes and low expression genes, respectively</li> </ul> |

**IMPORTANT!** The RNAscope® Fluorescent kits are primarily targeted for fresh frozen and cultured cells. This is mainly due to imaging and analysis challenges with interference from tissue autofluorescence. You can run the RNAscope® Fluorescent kit on solid tumor FFPE tissues if you have access to a multi-spectral imaging system, such as Nuance FX (Nuance). Solid tumors such as breast, colon, kidney, and liver have been successfully tested.

## Control examples

Figure 2 is an example of expression in the cerebral cortex of normal mouse brain.

**Figure 2.** *Npy* (red) and *Fezf2* (green) expression in the cerebral cortex of normal mouse brain stained using the RNAscope® Fluorescent Multiplex Kit; 63X oil lens, confocal image.



## Troubleshooting



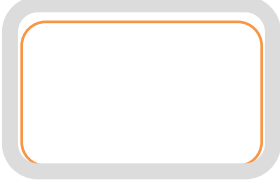
For troubleshooting information, please contact technical support at [support@acdbio.com](mailto:support@acdbio.com).

# A

## Appendix A. Reagent Volume Guidelines

### Determine reagent volume

Before starting your experiment, measure the inner edge of the hydrophobic barrier to determine the recommended number of drops needed per slide (see table below).

| Size of hydrophobic barrier* (in) | Recommended number of drops per slide | Recommended volume per slide (µL) | Relative template size  |
|-----------------------------------|---------------------------------------|-----------------------------------|---|
| 0.75" x 0.75" †                   | 4                                     | 120                               |   |
| 0.75" x 1.0"                      | 5                                     | 150                               |  |
| 0.75" x 1.25"                     | 6                                     | 180                               |  |

\* Hydrophobic barrier measured at inner edge. References in this user manual are for the 0.75" x 0.75" hydrophobic barrier size.

† Recommended hydrophobic barrier size is 0.75" x 0.75". With this barrier size, each probe is sufficient for staining ~20 sections. Larger tissue sections will result in fewer tests.



# Appendix B. Safety

## Chemical safety



**WARNING!**

**GENERAL CHEMICAL HANDLING.** To minimize hazards, ensure laboratory personnel read and practice the general safety guidelines for chemical usage, storage, and waste provided below, and consult the relevant SDS for specific precautions and instructions:

- Read and understand the Safety Data Sheets (SDSs) provided before you store, handle, or work with any chemicals or hazardous materials. To obtain SDSs, <https://acdbio.com/technical-support/user-manuals>.
- Minimize contact with chemicals. Wear appropriate personal protective equipment when handling chemicals (for example, safety glasses, gloves, or protective clothing).
- Minimize the inhalation of chemicals. Do not leave chemical containers open. Use only with adequate ventilation (for example, fume hood).
- Characterize (by analysis if necessary) the waste generated by the particular applications, reagents, and substrates used in your laboratory.
- Ensure that the waste is stored, transferred, transported, and disposed of according to all local, state/provincial, and/or national regulations.
- **IMPORTANT!** Radioactive or biohazardous materials may require special handling, and disposal limitations may apply.

## Biological hazard safety



**WARNING!**

**BIOHAZARD.** Biological samples such as tissues, body fluids, infectious agents, and blood of humans and other animals have the potential to transmit infectious diseases. Follow all applicable local, state/provincial, and/or national regulations. Wear appropriate protective equipment, which includes but is not limited to: protective eyewear, face shield, clothing/lab coat, and gloves. All work should be conducted in properly equipped facilities using the appropriate safety equipment (for example, physical containment devices). Individuals should be trained according to applicable regulatory and company/institution requirements before working with potentially infectious materials. Read and follow the applicable guidelines and/or regulatory requirements in the following:

## In the U.S.:

- U.S. Department of Health and Human Services guidelines published in Biosafety in Microbiological and Biomedical Laboratories found at: <https://www.cdc.gov/biosafety/>
- Occupational Safety and Health Standards, Bloodborne Pathogens (29 CFR§1910.1030), found at:  
[https://www.osha.gov/pls/oshaweb/owadisp.show\\_document?p\\_id=10051&p\\_table=STANDARDS](https://www.osha.gov/pls/oshaweb/owadisp.show_document?p_id=10051&p_table=STANDARDS)
- Your company's/institution's Biosafety Program protocols for working with/handling potentially infectious materials.
- Additional information about biohazard guidelines is available at: <https://www.cdc.gov/biosafety/>

## In the EU:

- Check local guidelines and legislation on biohazard and biosafety precaution and refer to the best practices published in the World Health Organization (WHO) Laboratory Biosafety Manual, third edition, found at:  
[http://www.who.int/csr/resources/publications/biosafety/WHO\\_CDS\\_CSR\\_LYO\\_2004\\_11/en/](http://www.who.int/csr/resources/publications/biosafety/WHO_CDS_CSR_LYO_2004_11/en/)
- Information about the Registration, Evaluation, Authorisation and Restriction of Chemicals (REACH) can be found at: <https://echa.europa.eu/regulations/reach>

# Documentation and support

## Obtaining SDSs

Safety Data Sheets (SDSs) are available at: <https://acdbio.com/technical-support/user-manuals>. For the SDSs of chemicals not distributed by Advanced Cell Diagnostics, contact the chemical manufacturer.

## Obtaining support

For the latest services and support information, go to: <https://acdbio.com/technical-support/support-overview>. At the website, you can:

- Access telephone and fax numbers to contact Technical Support and Sales facilities.
- Search through frequently asked questions (FAQs).
- Submit a question directly to Technical Support.
- Search for user documents, MSDSs, application notes, citations, training videos, and other product support documents.
- Find out information about customer training events.

## Contact information

Advanced Cell Diagnostics, Inc.  
7707 Gateway Blvd Suite 200  
Newark, CA 94545  
Toll Free: 1-877-576-3636  
Direct: 1-510-576-8800  
Fax: 1-510-576-8801  
Information: [info@acdbio.com](mailto:info@acdbio.com)  
Orders: [orders@acdbio.com](mailto:orders@acdbio.com)  
Support Email: [support@acdbio.com](mailto:support@acdbio.com)

## Limited product warranty

Advanced Cell Diagnostics, Inc. and/or its affiliate(s) warrant their products as set forth in the ACD General Terms and Conditions of Sale found on the ADC website. If you have any questions, please contact Advanced Cell Diagnostics at <https://acdbio.com/about/contact>.

**Headquarters**

7707 Gateway Blvd Suite 200, Newark, CA 94545 Phone 1-510-576-8800 Toll Free 1-877-576-3636

For support, email [support@acdbio.com](mailto:support@acdbio.com)

[www.acdbio.com](http://www.acdbio.com)

